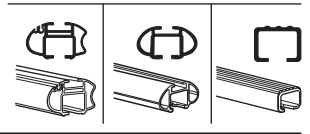
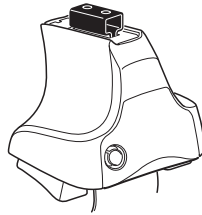


Kit 1088

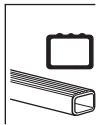
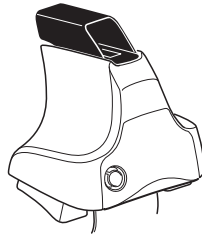
TOYOTA RAV4, 3-dr SUV, 94-99

TOYOTA RAV4, 5-dr SUV, 94-99

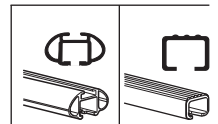
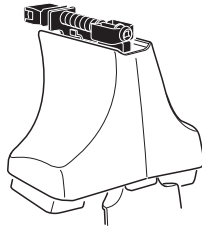
480R
754



480



750



THULE[®]
SWEDEN

ISO 11154-E

xx kg / xx lbs + 7 kg / 15,4 lbs = **Max. 75kg**

 3 kg / 6,6 lbs = **Max. 165 lbs**

80 km/h / 50 Mph, 130 km/h / 80 Mph, 40 km/h / 25 Mph

THULE Kit XXXX **instructions**

480R/754: x1 ruler, x4 part, x4 screws, x4 nuts

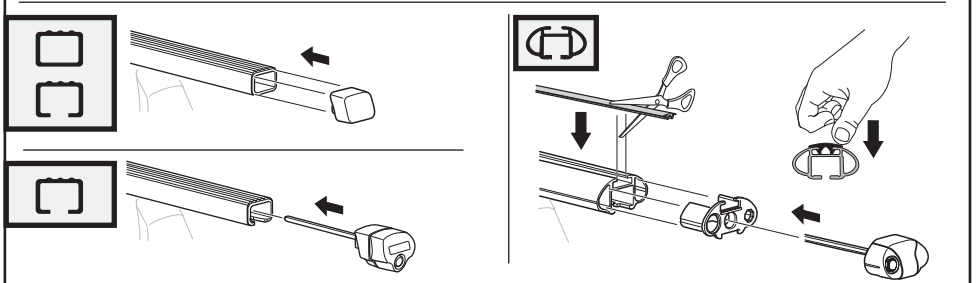
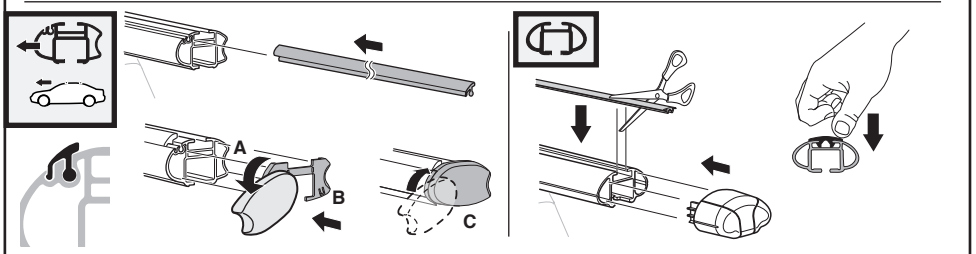
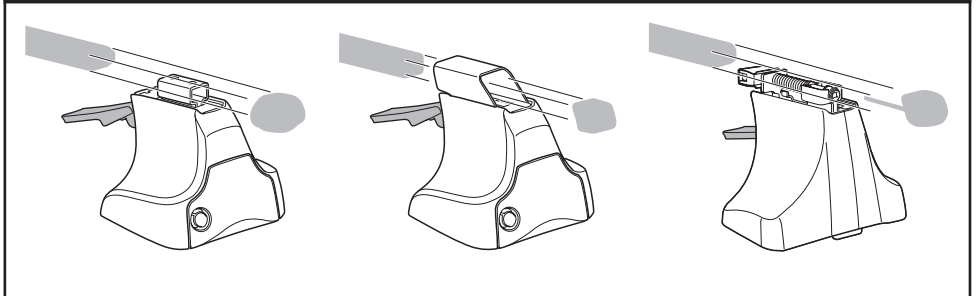
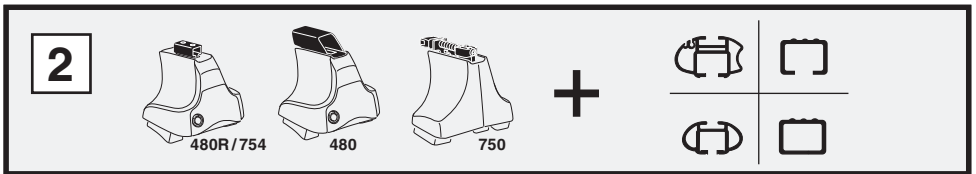
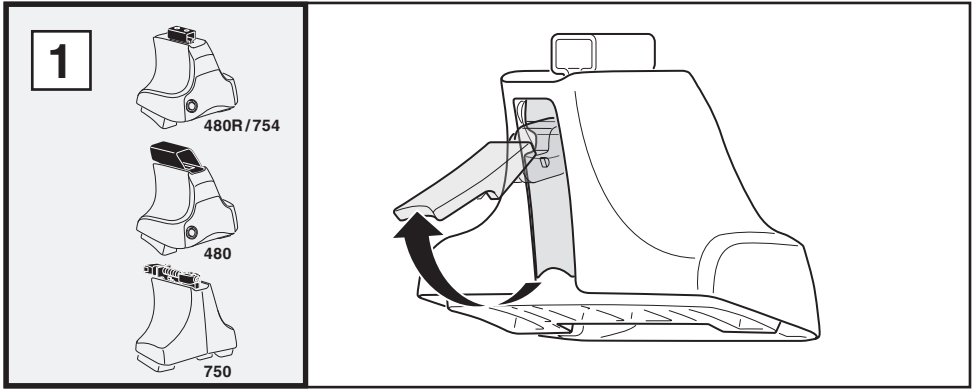
480: x1 ruler, x4 part, x4 screws, x4 nuts

750: x1 ruler, x4 part, x4 screws

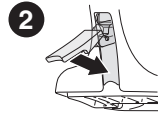
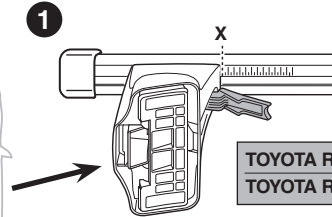
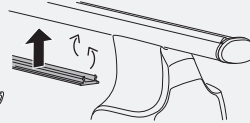
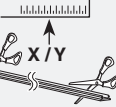
x2	x2	x2	x2	x2
x2	x2	x2	x2	x2
x2		x4	x4	
x4		x4		

176 x 4, 07 x 4, x1 directional pad

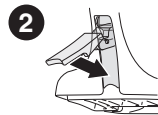
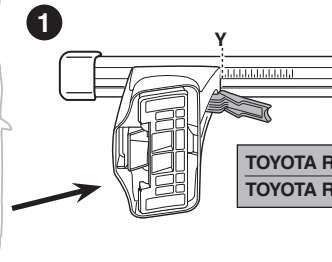
Kit



3



	X
TOYOTA RAV4, 3-dr SUV, 94-99	26,5
TOYOTA RAV4, 5-dr SUV, 94-99	26,5



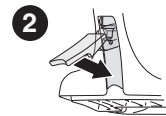
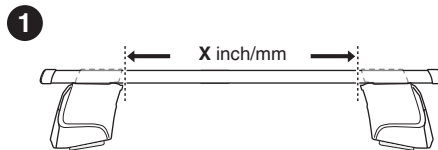
	Y
TOYOTA RAV4, 3-dr SUV, 94-99	25,5
TOYOTA RAV4, 5-dr SUV, 94-99	25,5



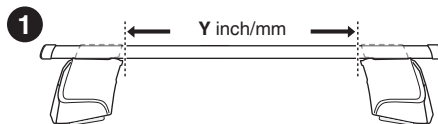
480R



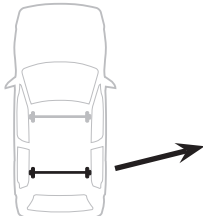
480



	X inch	X mm
TOYOTA RAV4, 3-dr SUV, 94-99	36 1/8"	916 mm
TOYOTA RAV4, 5-dr SUV, 94-99	36 1/8"	916 mm

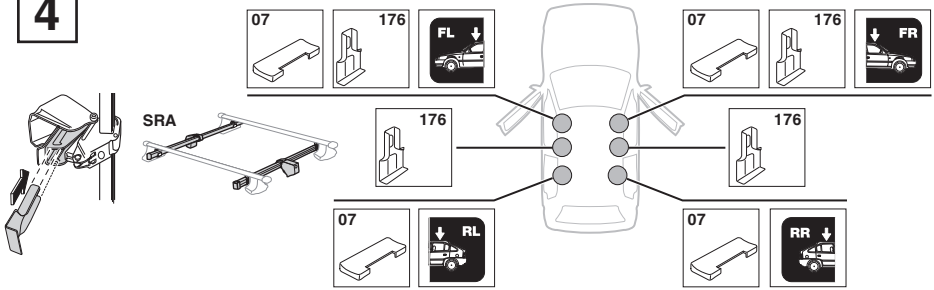


	Y inch	Y mm
TOYOTA RAV4, 3-dr SUV, 94-99	35 5/8"	906 mm
TOYOTA RAV4, 5-dr SUV, 94-99	35 5/8"	906 mm

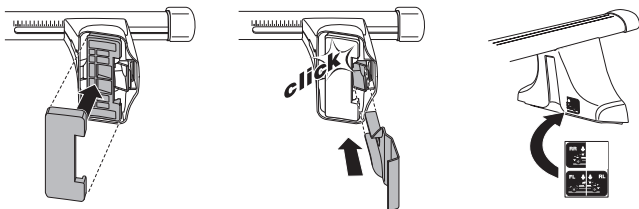
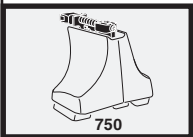
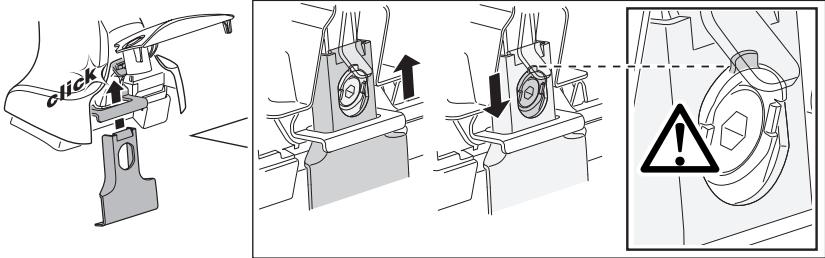
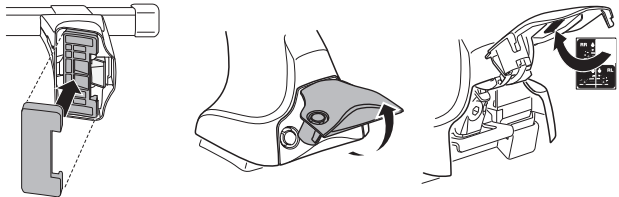
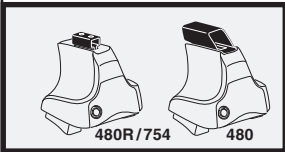
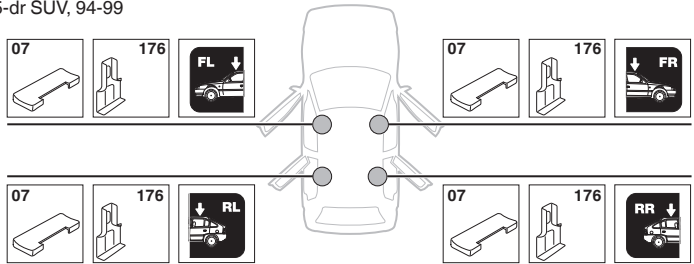


4

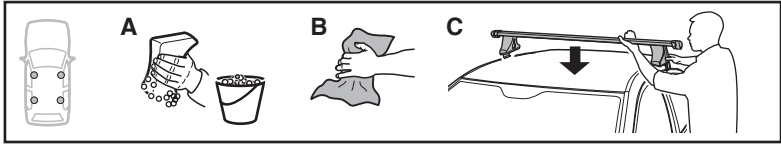
TOYOTA RAV4, 3-dr SUV, 94-99



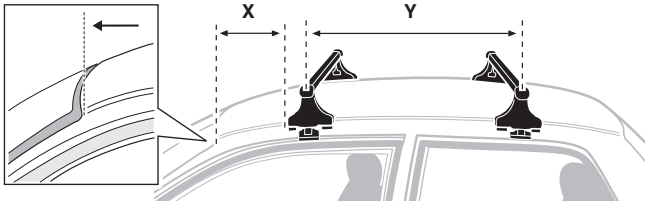
TOYOTA RAV4, 5-dr SUV, 94-99



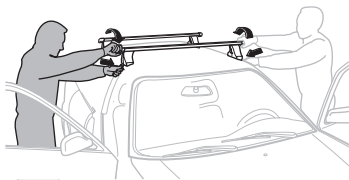
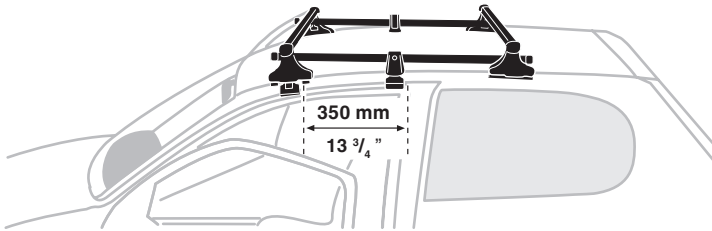
5



	X mm	Y mm	X inch	Y inch
TOYOTA RAV4, 3-dr SUV, 94-99	300 mm	700 mm	11 ³ / ₄ "	27 ¹ / ₂ "
TOYOTA RAV4, 5-dr SUV, 94-99	300 mm	700 mm	11 ³ / ₄ "	27 ¹ / ₂ "



TOYOTA RAV4, 3-dr SUV, 94-99



GB/US Tighten alternately

D Die Schrauben abwechselnd anziehen

F Serrer alternativement chaque côté

NL Afwisselend aan de linker- en de rechterkant aandraaien

I Alternare il serraggio delle viti

E Serrare alternativamente

PT Aperte alternadamente

S Dra åt växelvis

FIN Kierrä vuorotellen

EST Pinguldage vaheldumisi

LAT Pielvelciet pamīšus

LIT Užsukinėkite pakaitomis

PL Śruby dokręcaj naprzemiennie

RU Затягивайте попеременно

CZ Pokręťte bagažníka dokręcaj dokręcaj naprzemiennie.

SK Doťahujte striedavo

SLO Privijajte izmenično.

HR Naizmjenično zategnite

HU Egymástól függetlenül szorítandó

GR Σφίγγετε εναλλάξ

TR Dönüşümlü sıkın

中文 交替拧紧

한국어 번갈아 가며 조이십시오.

日本語 交互に締め付けてください。

ไทย ชั้สลับแบบสลับ

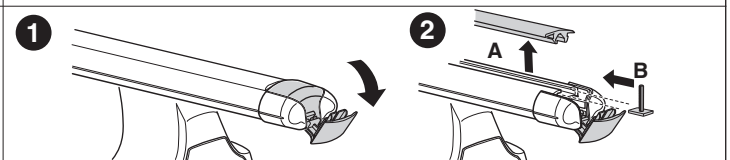
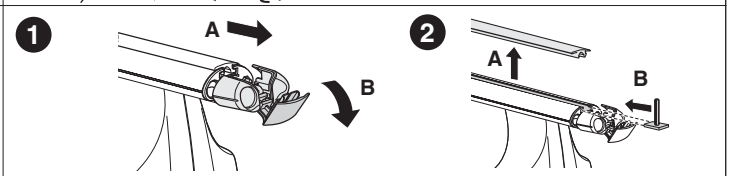
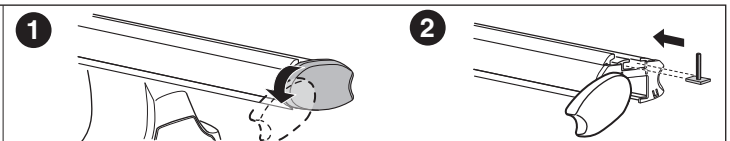
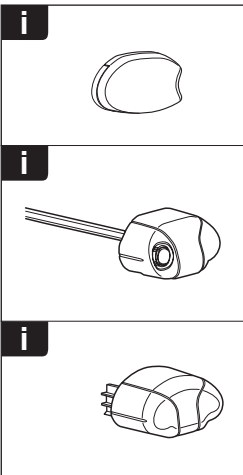
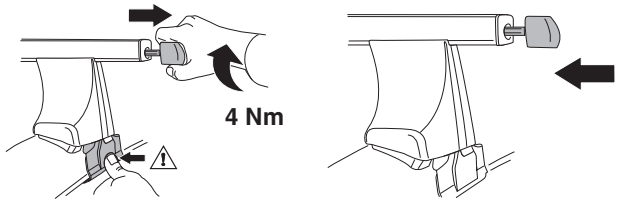
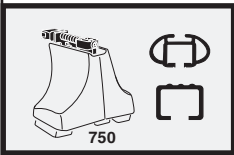
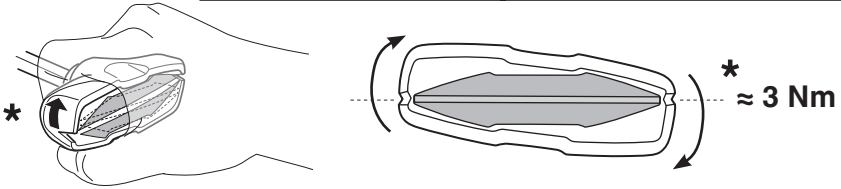
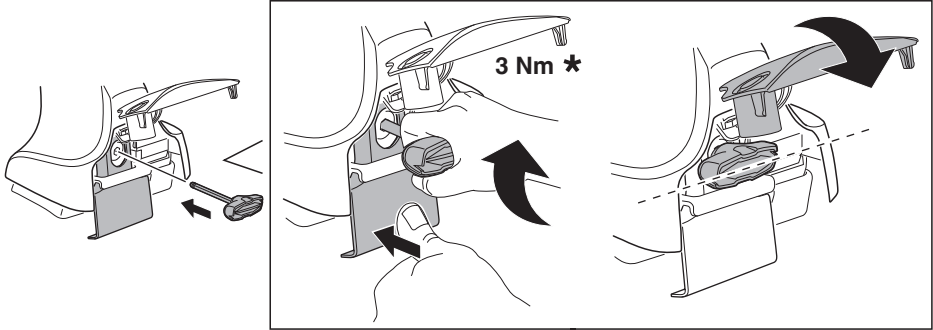
6

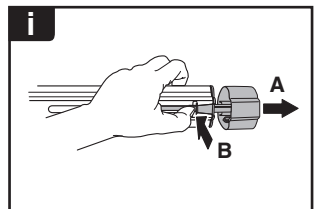
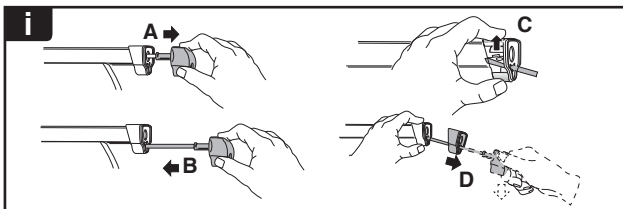
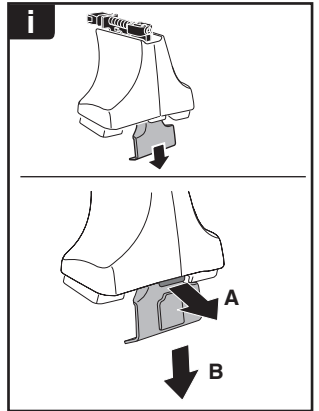
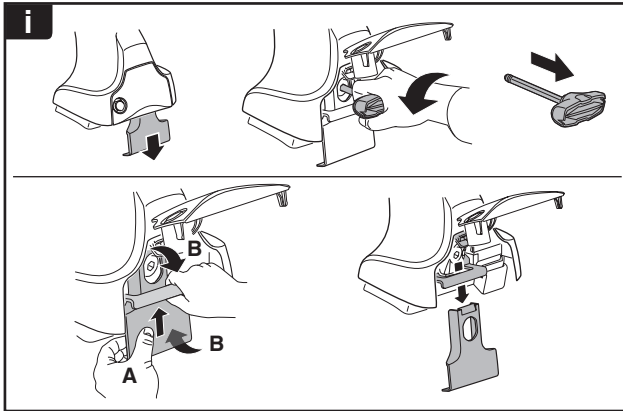
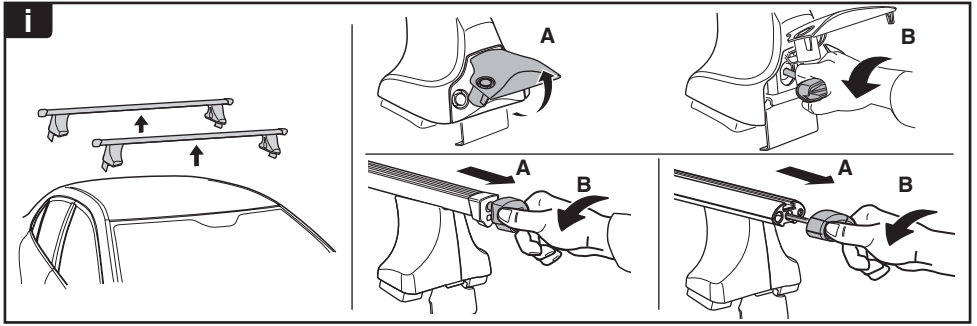


480R/754

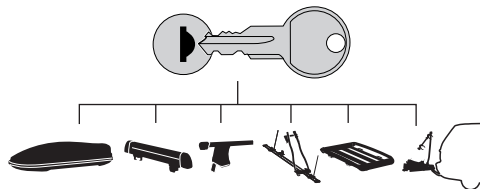


480

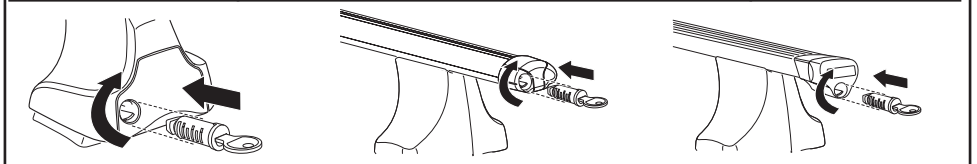




THULE
SWEDEN
**ONE
KEY
SYSTEM**



- 544 (x4)
- 596 (x6)
- 588 (x8)
- NA 510 (x10)
- EUR 452 (x12)
- ASIA



WW ▶ Thule Sweden AB, Box 69, 330 33 Hillerstorp, SWEDEN
NA ▶ Thule Inc., 42 Silvermine Road, Seymour, Connecticut 06483, USA

info@thule.com
customer.service@thule.com

www.thule.com