

Kit 1030

NISSAN Almera, 3/4/5-dr, 95-99

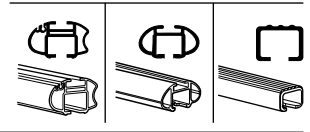
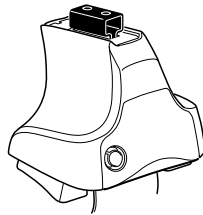
NISSAN Pulsar, 3/4/5-dr, 95-00

NISSAN Sentra, 3/4/5-dr, 95-00

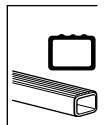
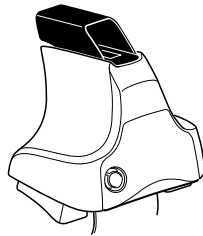
NISSAN Sunny, 3/4/5-dr, 95-98

NISSAN Lucino, 3/4/5-dr, 95-00

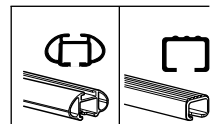
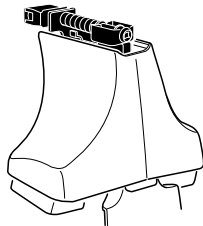
480R
754



480



750



xx kg
 xx lbs + 7 kg / 15,4 lbs = **Max. 50 kg**
 3 kg / 6,6 lbs = **Max. 110 lbs**

80 km/h 50 Mph
 130 km/h 80 Mph
 40 km/h 25 Mph
km/h Mph

THULE + **Kit XXXX**

instructions

x1 x4 x4 x4

480R/754

x1 x4 x4 x4

480

x1 x4 x4

750

x2	x2	x2	x2	x2
x2		x2	x2	
x2		x4	x2	
x4		x4		

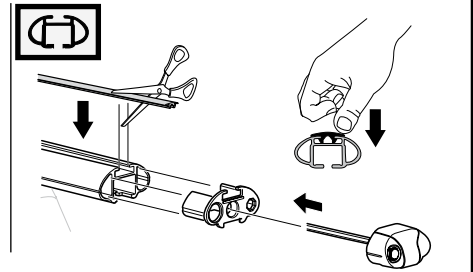
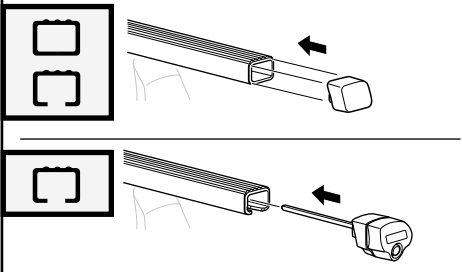
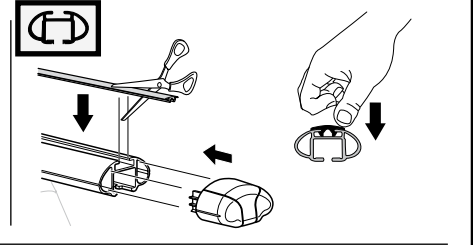
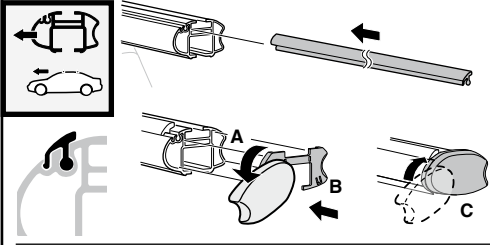
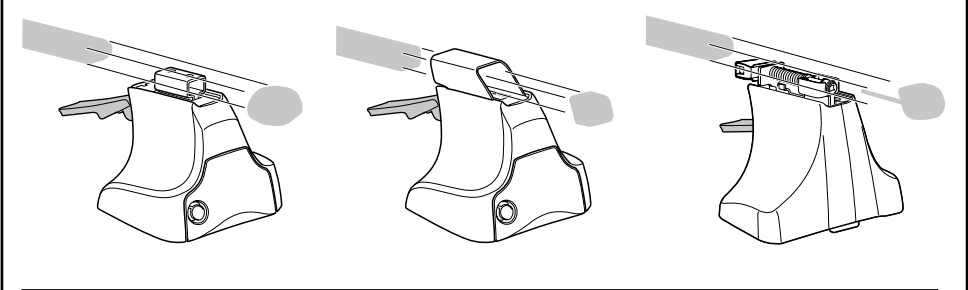
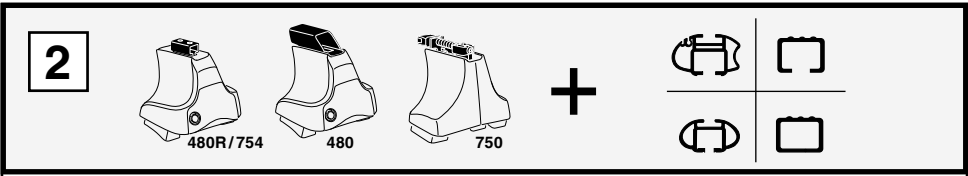
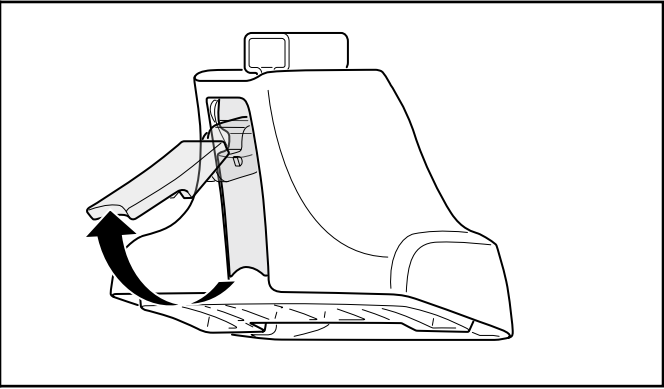
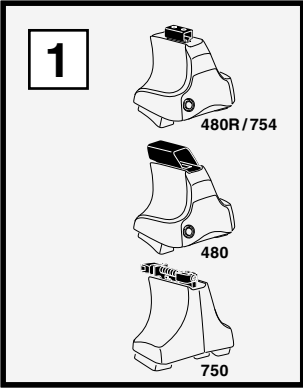
81 x 4

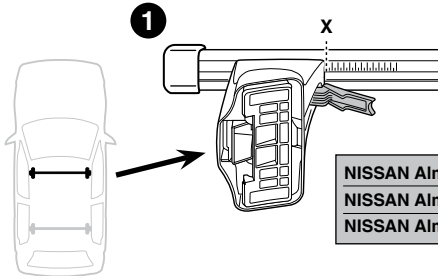
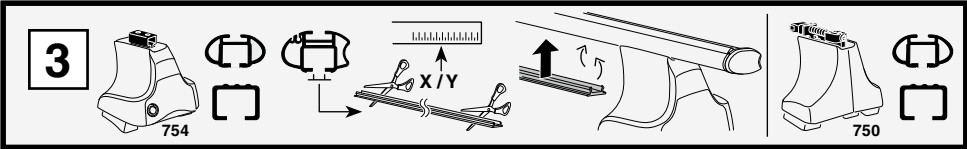
83 x 2

16 x 4

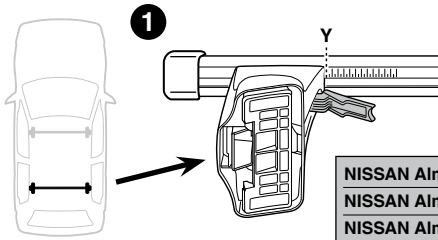
RR **FR**
FL **RL** x 1

Kit

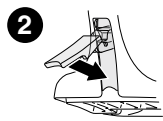
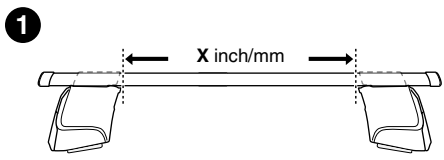
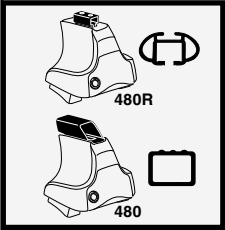




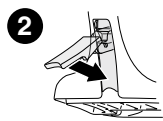
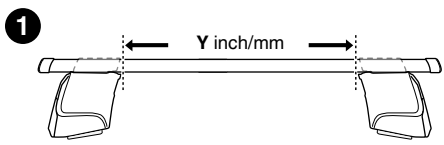
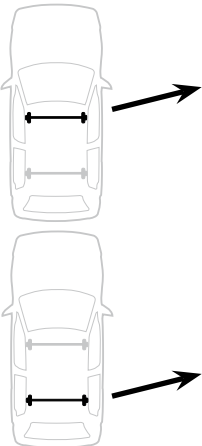
	X
NISSAN Almera, Pulsar, Sentra, Sunny, Lucion, 3-dr	24
NISSAN Almera, Pulsar, Sentra, Sunny, Lucion, 4-dr	24
NISSAN Almera, Pulsar, Sentra, Sunny, Lucion, 5-dr	24



	Y
NISSAN Almera, Pulsar, Sentra, Sunny, Lucion, 3-dr	24,5
NISSAN Almera, Pulsar, Sentra, Sunny, Lucion, 4-dr	23
NISSAN Almera, Pulsar, Sentra, Sunny, Lucion, 5-dr	23,5



	X inch	X mm
NISSAN Almera, Pulsar, Sentra, Sunny, Lucion, 3-dr	35 1/8"	891 mm
NISSAN Almera, Pulsar, Sentra, Sunny, Lucion, 4-dr	35 1/8"	891 mm
NISSAN Almera, Pulsar, Sentra, Sunny, Lucion, 5-dr	35 1/8"	891 mm

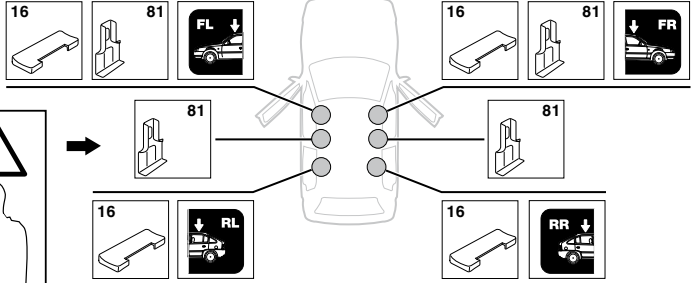
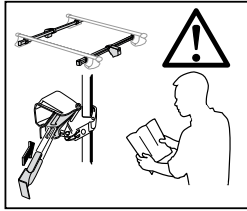


	Y inch	Y mm
NISSAN Almera, Pulsar, Sentra, Sunny, Lucion, 3-dr	35 1/4"	896 mm
NISSAN Almera, Pulsar, Sentra, Sunny, Lucion, 4-dr	34 5/8"	881 mm
NISSAN Almera, Pulsar, Sentra, Sunny, Lucion, 5-dr	34 7/8"	886 mm

4

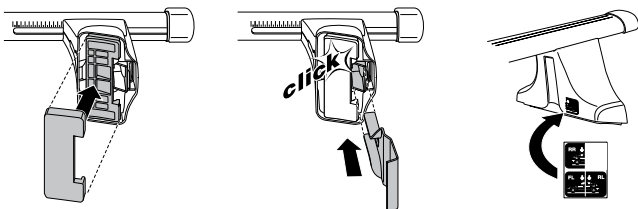
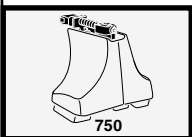
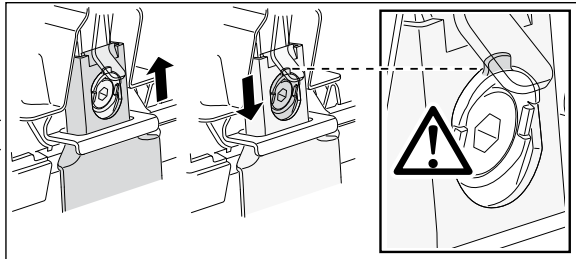
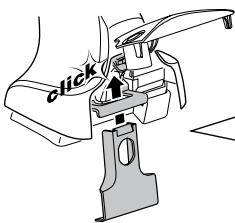
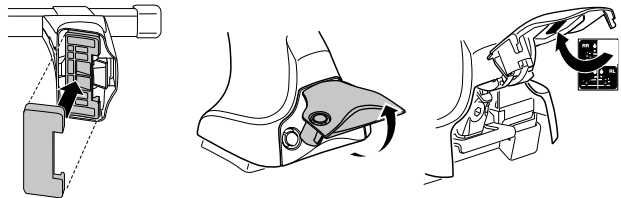
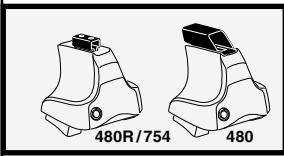
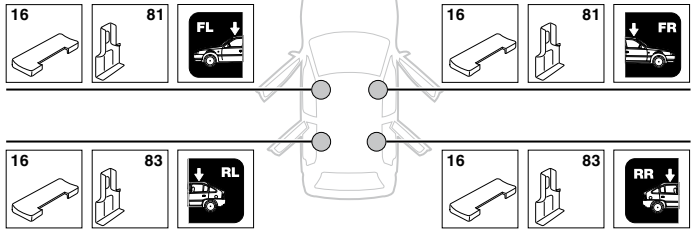
NISSAN Almera, Pulsar, Sentra, Sunny, Lucion, 3-dr

SRA

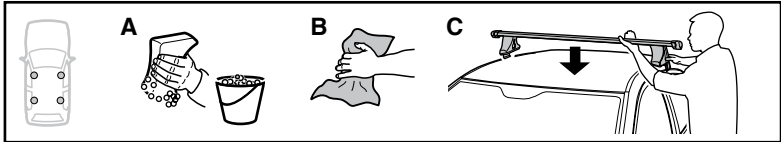


NISSAN Almera, Pulsar, Sentra, Sunny, Lucion, 4-dr

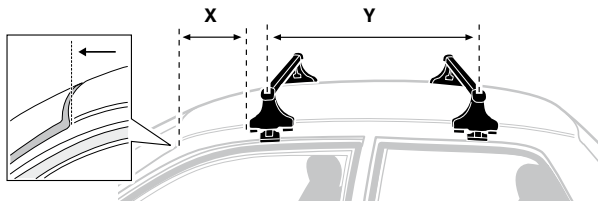
NISSAN Almera, Pulsar, Sentra, Sunny, Lucion, 5-dr



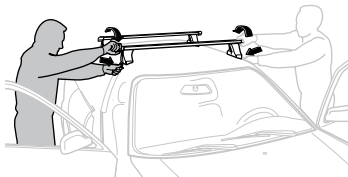
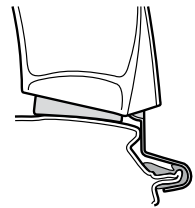
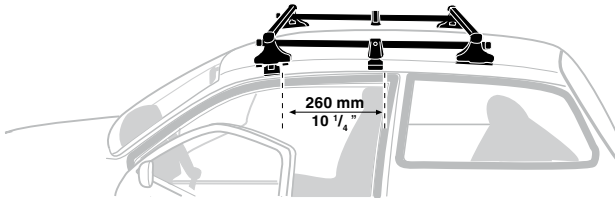
5



	X mm	Y mm	X inch	Y inch
NISSAN Almera, Pulsar, Sentra, Sunny, Lucion, 3-dr	200 mm	700 mm	7 ⁷ / ₈ "	27 ¹ / ₂ "
NISSAN Almera, Pulsar, Sentra, Sunny, Lucion, 4-dr	220 mm	650 mm	8 ⁵ / ₈ "	25 ⁵ / ₈ "
NISSAN Almera, Pulsar, Sentra, Sunny, Lucion, 5-dr	210 mm	680 mm	8 ¹ / ₄ "	26 ³ / ₄ "



NISSAN Almera, Pulsar, Sentra, Sunny, Lucion, 3-dr



GB/US Tighten alternately

D Die Schrauben abwechselnd anziehen

F Serrer alternativement chaque côté

NL Afwisselend aan de linker- en de rechterkant aandraaien

I Alternare il serraggio delle viti

E Serrare alternativamente

PT Aperte alternadamente

S Dra åt växelvis

FIN Kierrä vuorotellen

EST Pinguldage vaheldumisi

LAT Pievelciēt pamišus

LIT Užsukinėkite pakaitomis

PL Śruby dokręcaj naprzemiennie

RU Затягивайте попеременно

CZ Pokręťta багаžníka dokręcaj dokręcaj naprzemiennie.

SK Dotahujte striedavo

SLO Privijajte izmenično.

HR Naizmjenično zategnite

HU Egy mástól függetlenül szorítandó

GR Σφιγγετε εναλλάξ

TR Dönüşümüü sıkın

中文 交替拧紧

한국어 번갈아 가며 조이십시오.

日本語 交互に締め付けてください。

ไทย ชับในแบบสลับ

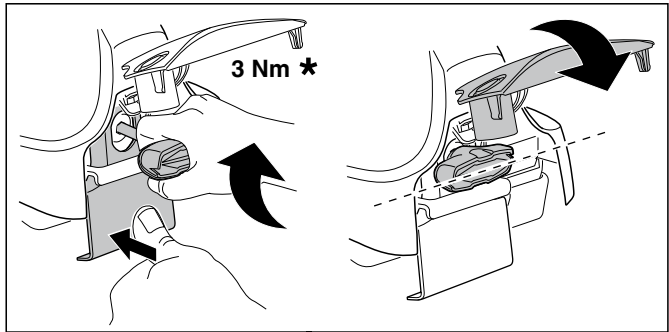
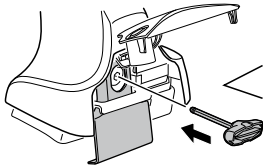
6



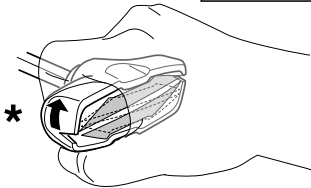
480R/754



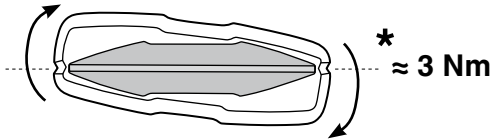
480



3 Nm *



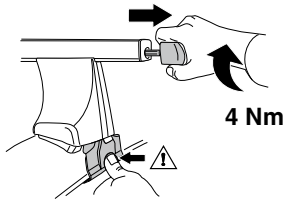
*



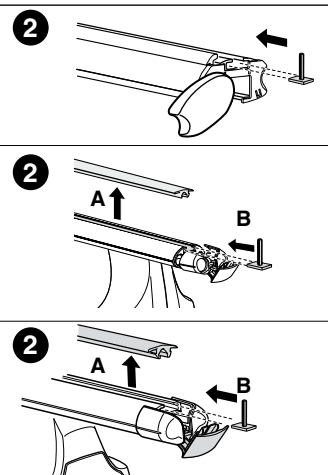
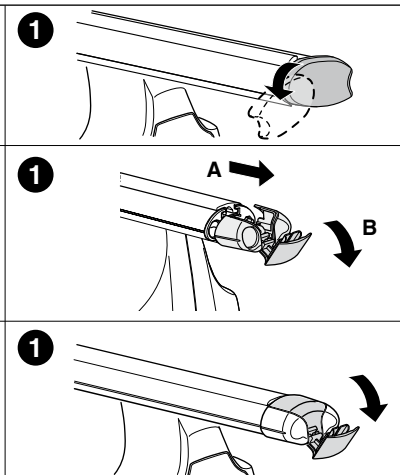
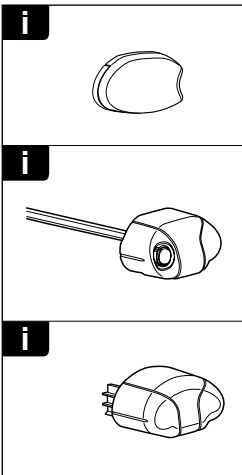
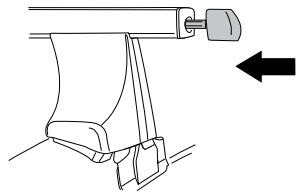
* ≈ 3 Nm

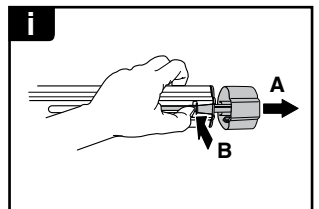
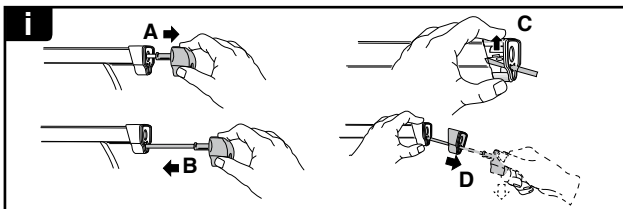
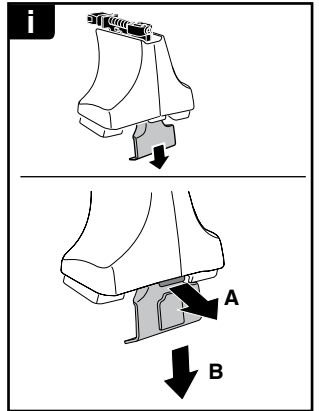
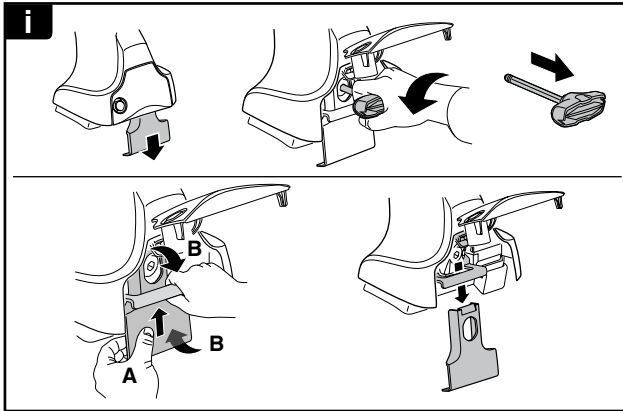
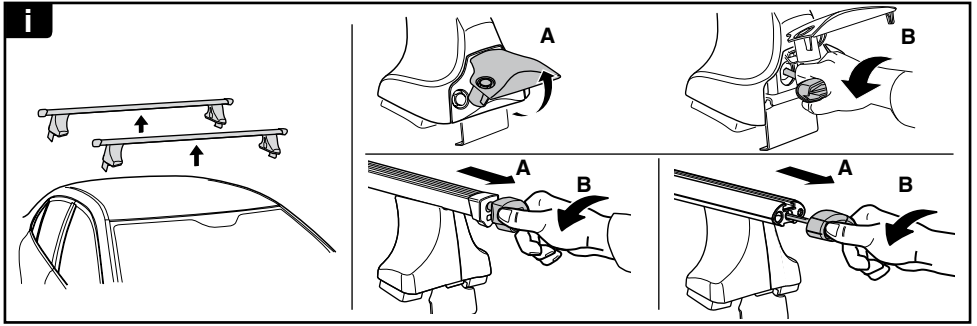


750

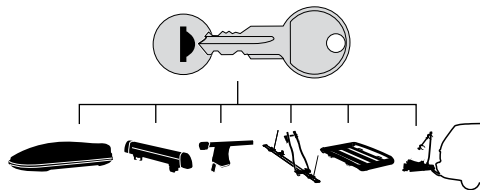


4 Nm

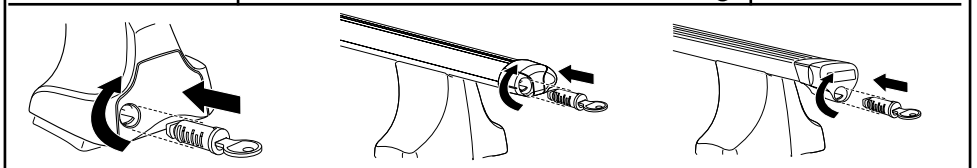




THULE
SWEDEN
**ONE
KEY
SYSTEM**



- 544 (x4)
- 596 (x6)
- 588 (x8)
- NA 510 (x10)
- EUR 452 (x12)
- ASIA



WW ▶ Thule Sweden AB, Box 69, 330 33 Hillerstorp, SWEDEN
NA ▶ Thule Inc., 42 Silvermine Road, Seymour, Connecticut 06483, USA

info@thule.com
customer.service@thule.com

www.thule.com